

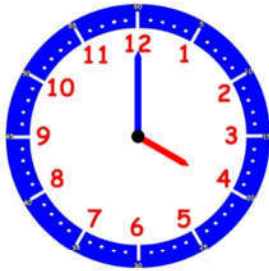
Horodator



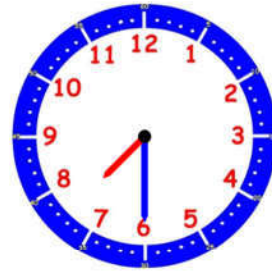
1	2	3	4	5
6	7	8	9	

Comment faire ?

L'horloge donne l'heure grâce à deux aiguilles.
La **grande aiguille** indique les minutes,
la **petite aiguille** indique les heures.



Il est **4 heures** car la petite aiguille vise le « 4 » et la grande indique le « 12 » qui représente « 0 » minute.

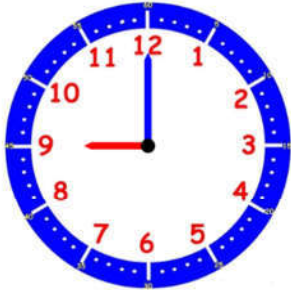


Il est **7h30** car la petite aiguille est après le 7 et avant le 8 et la grande aiguille est sur le 6 qui représente 6 fois 5 minutes, c'est-à-dire 30 minutes (une demi-heure).

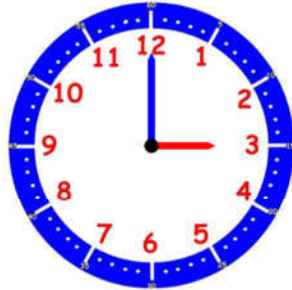
PRÉNOM :

Horodator

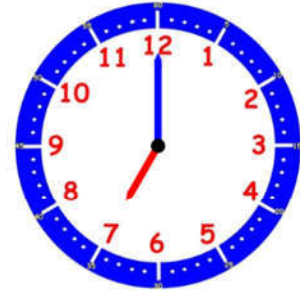
1



Il esth

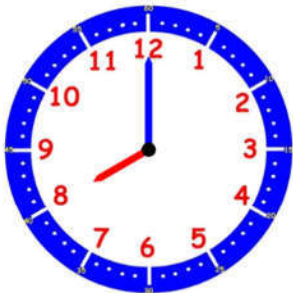


Il esth

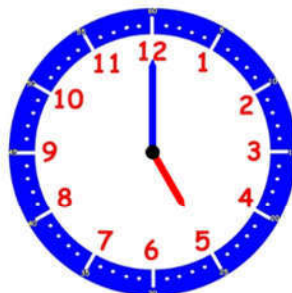


Il esth

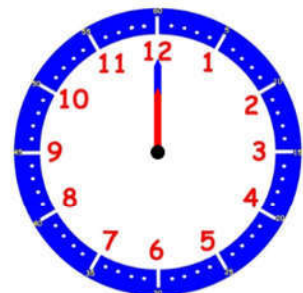
2



Il esth

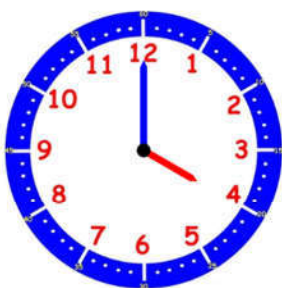


Il esth

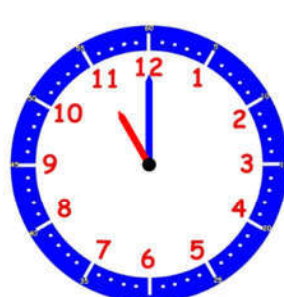


Il esth

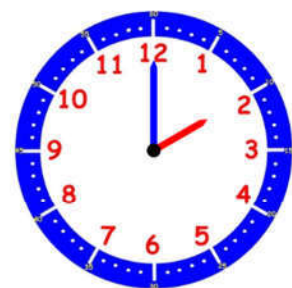
3



Il esth



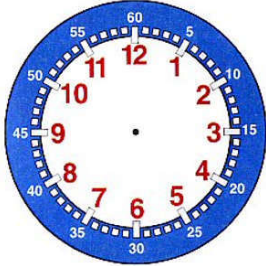
Il esth



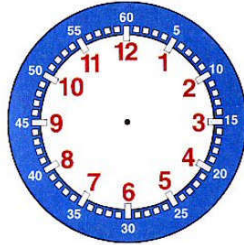
Il esth

Horodateur

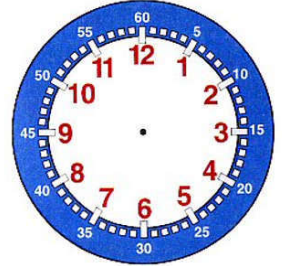
4



Il est 5 h

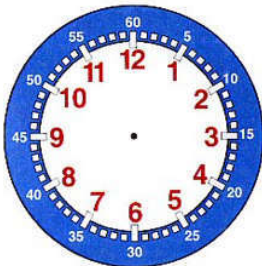


Il est 11 h

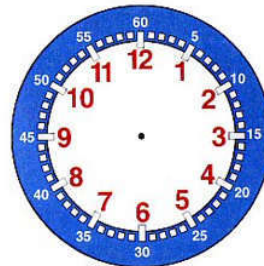


Il est 6 h

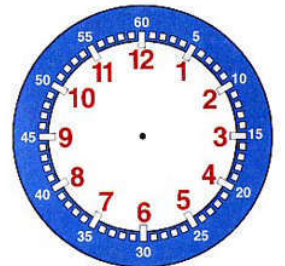
5



Il est 1 h

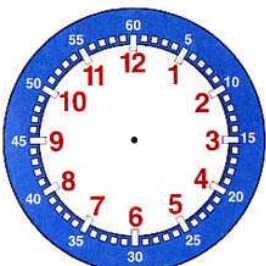


Il est 4 h

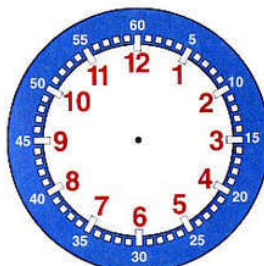


Il est 3 h

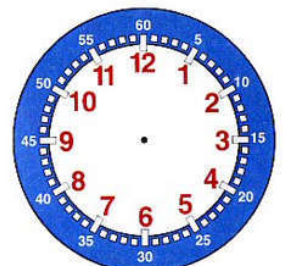
6



Il est 7 h



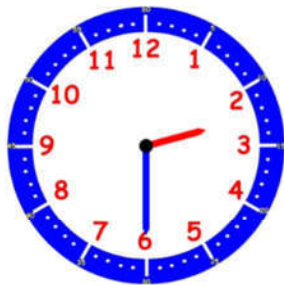
Il est 8 h



Il est 9 h

Horodator

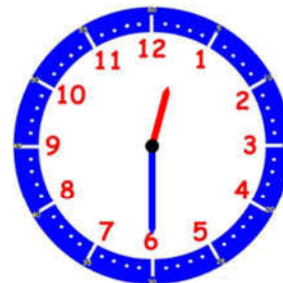
7



Il est..... h.....min



Il est.....h.....min

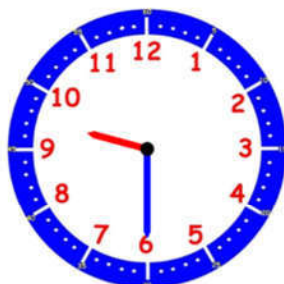


Il est.....h.....min

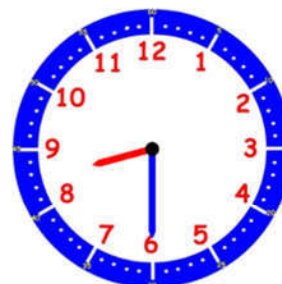
8



Il est.....h.....min

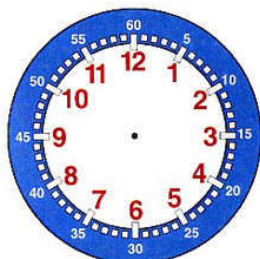


Il est.....h.....min

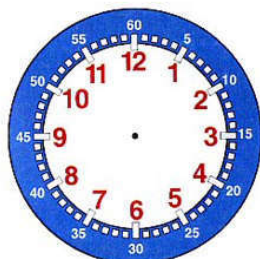


Il est.....h.....min

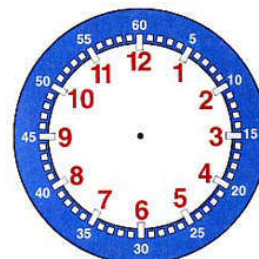
9



Il est 5h30.



Il est 9h30.



Il est 3h30.